



Waggin' Tails

NEWSLETTER OF THE HUMANESOCIETY OF MASON COUNTY

P.O. Box 168, Belfair, WA 98528 • 23910 NE State Route 3 • (360) 275-9310

info@humanesocietyofmasoncounty.com

Fall 2007

Senior Pet Care



Pets are living longer than ever before thanks to advances in veterinary medicine. However with this increased lifespan comes an increase in the types of ailments that can afflict senior pets. As pets reach the golden years, there are a variety of conditions and diseases that they can face, including weight and mobility changes; osteoarthritis; kidney, heart, and liver disease; tumors and cancers; hormone disorders such as diabetes and thyroid imbalance; and many others.

Just as the health care needs of humans change as we age, the same applies to pets. It's critical for pet owners to work closely with their veterinarian to devise a health plan that is best for their senior pet. To assist veterinary hospitals in offering optimal care for senior pets, AAHA has issued a set of Senior Care Guidelines for Dogs and Cats. These guidelines provide a framework for veterinarians to provide optimal care for all senior pets. [Read more of this article here.](#)

"We owe it to ourselves and the animal world as well to create, not merely a body of rules and regulations to govern our conduct, but a level of sensibility that makes us care, deeply and constructively, about the entire planet and all of it's varied inhabitants. If we can accomplish this, then perhaps, some far off day, those who follow us down the track of the generations will be able to dwell in relative harmony with all of the creatures of the earth, human and non-human." -William Kunstler

HSMC Pets Safety Tips for Halloween



Beware of ghosts, goblins and witches! Halloween is full of fun things for you and your family to enjoy, from Jack-o'-lanterns, scary masks and costumes to the sounds of little trick-or-treaters at your door; but this is a holiday that can be potentially dangerous for your pets. Keep the following precautions in mind when preparing for the frightfully fun festivities and help ensure that everyone in your family—including your pet—has a safe Halloween.

Keep your pet in a quiet place, away from trick-or-treaters and other Halloween activities. You may know that the miniature monsters and goblins that come knocking on Halloween aren't real, but pets don't. Dogs and cats are creatures of habit and could become frightened or agitated by the unaccustomed sights and sounds of costumed visitors. In addition, frequently opened doors provide a perfect opportunity for escape, which can go unnoticed during all the commotion. Be sure all pets are wearing collars and ID tags in case of an accidental getaway.

Place live flame decorations like candles and jack-o'-lanterns out of your pet's reach. Curious critters risk being singed or burned by the flame—they could also easily knock over a candle or pumpkin and cause a fire.

Keep candy away from pets. All those sweets may taste great to critters, but candy, especially chocolate, can be toxic to pets. Candy wrappers can also be harmful if swallowed. Instead, tempt your pet with a few of his favorite treats.

Resist the urge to put your pet in a costume. You may think your pet looks adorable dressed as a princess, but most pets don't like the constraints of costumes. If you do decide to play dress-up, make sure the costume is safe for your pet and doesn't constrain her movement, hearing or ability to breathe. Check the costume for parts your pet could chew off

and choke on and look for dangling pieces like flowing capes that could injure her.

Don't let the family dog accompany the kids on their trick-or-treat outing. Children may have a difficult time handling a pet during the festivities and your pooch could get loose, especially if your dog is spooked by the strange sights and sounds of trick-or-treaters.

Keep decorations that pets could chew on—like streamers and fake spider webs—and wires and cords from electric decorations out of reach. If pets chomp on Halloween decorations they could choke or become ill and, if they chew on electrical cords, they risk a potentially deadly electrical shock. Pets could also become tangled and injured by dangling cords or decorations.

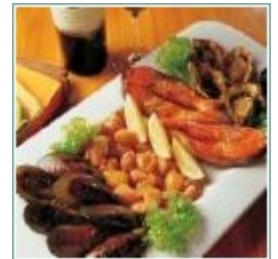


A Poem ~ A Pets Love

*A companion, a pal, A very best friend. Someone to trust, To love 'til the end.
Someone to trust, When feeling blue. Always a smile, T'always greet you.
Always a smile, To dry up your tears. A person to be there, To quiet your fears.
A person to be there, When lonely or sad. Loving regardless, If hating or mad.
Loving regardless, If caring or cruel. No matter what, Genius or fool.
No matter what, They stand by you. Who is this person, Have you a clue?
Who is this person? I'll tell you who. This is your pet, That loves through 'n through.*

-Author Unknown

Come and join in the festivities and show your support for an important cause! The North Mason Eagles #4226 will be hosting a fabulous seafood dinner on October 19th, 2007 starting at 6PM. The dinner menu includes clams, crab, oysters, salmon, hush puppies, salad and dessert. There is also going to be a raffle featuring gift baskets filled with wonderful items great for holiday gift giving.



(Cost per person is \$15.00. The Eagles are located at 80 NE Alder Creek Lane in Belfair)

Cheesy Autumn Yum Yum Dog Treat Recipes

(Homemade dog treats are fun to make and healthier than many of the store-bought versions).

INGREDIENTS

1 cup rolled oats (such as Quaker)
1/3 cup margarine
1 cup Boiling water
3/4 cup cornmeal
1 tablespoons sugar
2 teaspoons chicken or beef flavored instant bouillon
1/2 cup milk
1 cup shredded cheddar cheese
1 egg, beaten
2 - 3 cups whole wheat flour.

INSTRUCTIONS

Preheat your oven to 325 degrees.

Grease cookie sheets.

In large bowl, combine rolled oats, margarine and boiling water; let stand 10 minutes. Stir in cornmeal, sugar, bouillon, milk, cheese and egg; mix well. Lightly spoon flour into measuring cup; level off. Add flour 1 cup at a time, mixing well after each addition to form a stiff dough.

On floured surface, knead in remaining flour until dough is smooth and no longer sticky, 3 to 4 minutes. Roll or pat out dough to 1/2 inch thickness, cut with bone shaped cookie cutter. Place 1 inch apart on greased cookie sheets. Bake at 325 degrees for 35 to 45 minutes on until golden brown. Cool completely. Store loosely covered. Makes 3 1/2 dozen large dog biscuits or 8 dozen small dog biscuits.

Storing Dog Treats

In general you should store dog treats the same way you would homemade people cookies. That being said, there are two main variables that determine storage time - the amount and type of fat in the recipe and your local weather conditions. If your recipe uses fats such as butter, or meat bits or juices then it will be more prone to rancidity than a recipe that uses some vegetable oil or shortening. Your treats may mold or spoil much faster in humid or very hot climates.

Refrigeration and Freezing - Refrigeration will prolong the life of more fragile dog treats. Make sure to store in a tightly sealed container or zip lock bag. You can also freeze most treats in zip lock freezer bags. Allow to thaw completely before use.